



L2L NEWSLETTER

Learning to Learn

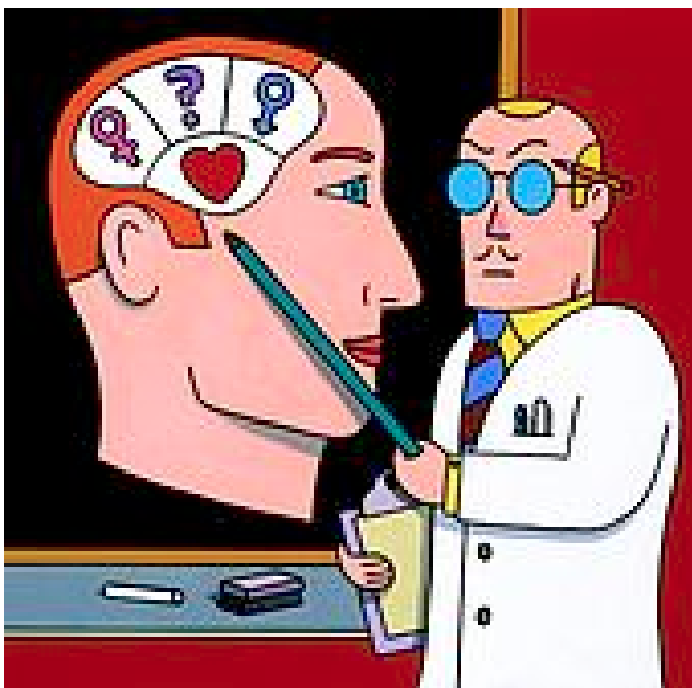
YEAR 7

"Literally brilliant"

One of the most significant aids to internet research and information searches is effective use of search engines. Understanding the best ways to narrow searches can save enormous amounts of time. Building students information literacy skills is of lifelong benefit. So, this week in Yr 7 L2L we looked at internet research. Specifically at using some of the features of google and ways to narrow searches to provide more useful results. We read through the colony quest assessment task. We also searched using terms from Colony Quest and All you works of God.

We tried to cover the following 15 operators.

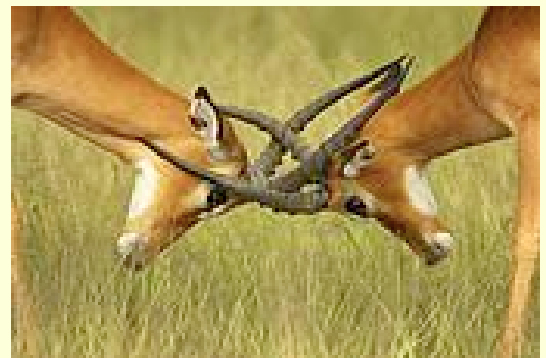
1. I'm feeling lucky button
2. spell checker



Restorative Justice .

Next week, Learning to Learn will be used to further develop the school's framework for the management of student behaviour. Students will be asked to reflect on how poor behaviour moves them away from the community and reinforce with them that such behaviour has consequences if their relationship is to be restored. This will then be taken up by staff and the leadership team to develop processes and procedures to facilitate this. Once again, this is a life lesson which reinforces with students the connection between their behaviour and the learning environment at Corpus Christi.

Neil (Editor)



- 3.define:
- 4."Exact phrase search"
- 5.+ and - searches
- 6.~synonyms
- 7.OR
- 8.site:
- 9.similar pages links
- 10.calculator + - / * %
- 11.cached results
- 12.news
- 13.translation
- 14.maps
- 15.google earth

YEAR 8

Allowing Bloom to bloom.

Year 8 took a deep breath in Learning to Learn this week. Many students were indicating that they needed time to digest their work and get themselves organised to allow them to really get on top of their work. Consequently, Year 8 were allowed to use their time to do their own work. Students were reminded of Bloom's schema and asked to reflect on the level of the work they are doing. Word has it that Task Sheets are in a state of flux and one of the key changes being mooted is the inclusion of a section asking students to rate their work on a range of levels. Such self evaluation has been



“METACOGNITION”

one of the key emphases in Learning to Learn and it is hoped that students will gain greater understanding if they reflect metacognitively. Next week Year 8 will bring their wealth of experience of poor behaviour to help develop our

Behaviour guidelines.

Staff Learning

Continuing with snippets from the Tasmanian Dept. of Education framework document concerning different literacies. We start with general literacy.

BEING NUMERATE

Being numerate involves having those concepts and skills of mathematics that are required to meet the demands of everyday life. It includes having the capacity to select and use them appropriately in real settings. Being truly numerate requires the knowledge and disposition to think and act mathematically and the confidence and intuition to apply particular mathematical principles to everyday problems. An opportunity to understand and use pattern, order and classification through first-hand experiences builds vital conceptual foundations for thinking and representation beyond the concrete and the immediate. These understandings are fundamental to being numerate. Access to high levels of abstract symbolic operation opens new ways of thinking and future academic and vocational pathways. Being numerate not only includes numeracy skills and understandings, but it also involves the critical and life-related aspects of being able to interpret information thoughtfully and accurately when it is represented in numerical and graphic form. This aspect of numeracy is akin to critical literacy – being able to recognise that information can be constructed to influence the reader or viewer. Developing the critical skills to analyse quantitative and spatial information when it is presented in various forms – for example graphs, tables, spreadsheets, charts and comparative models – enables young people to make more informed decisions, personally in everyday life, as consumers and as citizens.

.....