



L2L NEWSLETTER

Learning to Learn

Hats off to Year Seven!!



YEAR 7

DE BONO'S SIX HATS

Year Seven had a Six hats presentation about de Bono's six hats approach to decision making. Starring Chiara, Mr Zulian, Mr Robards, Mrs Ross, Mr McCann, Mrs Carnegie and Ms Quigley, Year Seven observed and listened as Chiara considered the very difficult decision about whether to change schools. Chiara went through all the different ways of thinking about the choices and clearly it worked a treat because she decided to stay at Corpus Christi. **White Hat:** With this thinking hat you focus on the data available. Look at the information you have, and see what you can learn from it. Look for

CLE Whizz!!

The Staff Development Day last Monday was a most timely and well received inservice. The work was put into the day by the members



of the Learning Communities Project team was evident in the professional presentations and positive outcomes. The flow of the day ensured that the enduring understanding was communicated. One only needs look at the comment made at the end of the day - How are we going to fit all this into Learning to Learn? It is clear that Learning to Learn has a significant part to play in the development of our students, even though we are teaching the program through the CLEs. I will put our stated enduring understanding in the Professional Learning section of this newsletter. How enduring is it? (*Editor*)

gaps in your knowledge, and either try to fill them or take account of them.

Red Hat:

'Wearing' the red hat, you look at problems using intuition, gut reaction, and emotion. Also try to think how other people will react emotionally. Try to understand the responses of people who do not fully know your reasoning.

Black Hat:

Using black hat thinking, look at all the bad points of the decision. Look at it cautiously and defensively. Try to see why it might not work.



This is important because it highlights the weak points in a plan. It allows you to eliminate them, alter them, or prepare contingency plans to counter them.

Yellow Hat:

The yellow hat helps you to think positively. It is the optimistic viewpoint that helps you to see all the benefits of the decision and the value in it. Yellow Hat thinking helps you to keep going when everything looks gloomy and difficult.

Green Hat:

The Green Hat stands for creativity. This is where you can develop creative solutions to a problem. It is a freewheeling way of thinking, in which there is little criticism of ideas. A whole range of creativity tools can help you here.

Blue Hat:

The Blue Hat stands for process control. This is the hat worn by people chairing meetings. When running into difficulties because ideas are running dry, they may direct activity into Green Hat thinking. When contingency plans are

needed, they will ask for Black Hat thinking, etc.



YEAR 8 CHOICES

The group started to work through the decision making process as they begin their journey towards

year nine and make decisions about their elective choices. The focus was on discerning what are my talents and interests and then looking at the decision making process. Thus both groups this week were looking at the decision making process but in different ways and for different purposes.

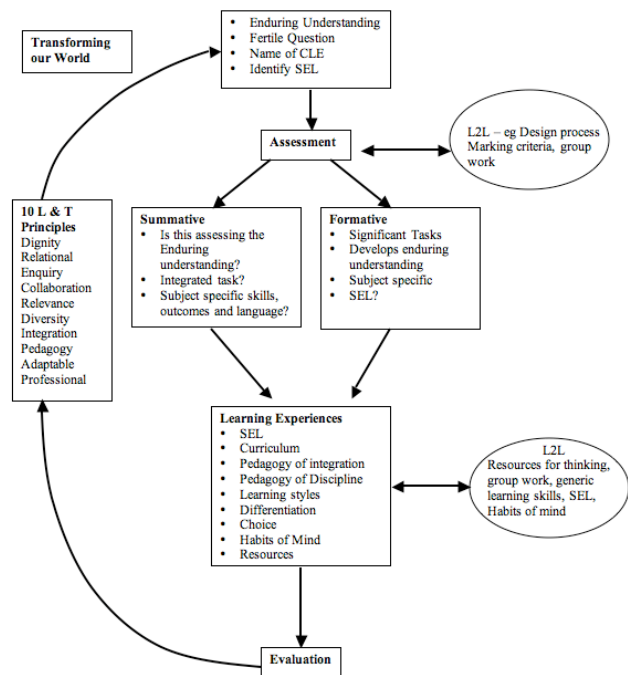
Our staff development day on Monday looked at the relationship between CLE learning and Learning to Learn. How well did you take on the Enduring Understanding and do you understand the relationship?

Enduring Understanding for the Day

L2L is an ongoing program of study that runs alongside the integrated curriculum proper. Its focus is on teaching thinking skills, generic skills and forms such as essay writing, and the design process that are used in learning across the curriculum, and social and emotional learning.

L2L is seen as an essential component of learning and teaching at Corpus Christi due to the unique complexity inherent in designing integrated curricular in transdisciplinary teams of teachers. It is a forum upon which teachers can share best practice so that a common language and pedagogy for teaching generic learnings across all CLEs can be achieved for the benefit of all students.

Framework for CLE creation



Staff Learning